

# JET<sup>®</sup>

## WMH TOOL GROUP

### Parts Manual

# Slow Speed Wet Sharpener

Models: JSSG-10



*Shown with optional Base and Support Arm Extension*

**WMH TOOL GROUP**  
2420 Vantage Drive  
Elgin, Illinois 60123  
Ph.: 800-274-6848  
[www.wmhtoolgroup.com](http://www.wmhtoolgroup.com)

Part No. M-708015  
Revision B1 11/06  
Copyright © WMH Tool Group

# Warranty and Service

WMH Tool Group, Inc., warrants every product it sells. If one of our tools needs service or repair, one of our Authorized Service Centers located throughout the United States can give you quick service. In most cases, any of these WMH Tool Group Authorized Service Centers can authorize warranty repair, assist you in obtaining parts, or perform routine maintenance and major repair on your JET® tools. For the name of an Authorized Service Center in your area call 1-800-274-6848.

## MORE INFORMATION

WMH Tool Group is consistently adding new products to the line. For complete, up-to-date product information, check with your local WMH Tool Group distributor, or visit [jettools.com](http://jettools.com).

## WARRANTY

JET products carry a limited warranty which varies in duration based upon the product. (MW = Metalworking, WW = Woodworking)

<b>90</b> DAY WARRANTY	<b>1</b> YEAR WARRANTY	<b>2</b> YEAR WARRANTY	<b>5</b> YEAR WARRANTY	<b>LIFE</b> LIFETIME WARRANTY	
Lathe Accessories Machine Accessories Mobile Bases Safety Equipment Specialty Items Vise Accessories	Air Tools- Contractor Air Tools-Industrial Air Tools-Light Industrial Lubrication	Body Repair Kits Bottle Jacks Cable Pullers Cold Saws Hoists-Air Hoists-Electric Metalforming Mill/Drills Milling Machines MW Bandsaws MW Drill Presses MW Finishing Equipment MW Lathes MW Precision Vises Pallet Trucks	Rigging Equip. Service Jacks Stackers Surface Grinders Tapping Trolleys-Air Trolleys-Electric Web Slings Winches-Electric	Beam Clamps Chain Hoist- Manual Lever Hoists Pullers-JCH Models Scissor Lift Tables Screw Jacks Trolleys-Geared Trolleys-Plain Winches-Manual WW Air Filtration WW Bandsaws WW Buffers WW Drill Presses WW Dust Collectors WW Dust Filters WW Dust Fittings WW Jointers WW Lathes WW Planers WW Sanders WW Shapers WW Tablesaws	Fastening Tools Mechanics Hand Tools Striking Tools Vises (non-precision) Clamps

## WHAT IS COVERED?

This warranty covers any defects in workmanship or materials subject to the exceptions stated below. Cutting tools, abrasives and other consumables are excluded from warranty coverage.

## WHO IS COVERED?

This warranty covers only the initial purchaser of the product.

## WHAT IS THE PERIOD OF COVERAGE?

The general JET warranty lasts for the time period specified in the product literature of each product.

## WHAT IS NOT COVERED?

Five Year Warranties do not cover woodworking (WW) products used for commercial, industrial or educational purposes. Woodworking products with Five Year Warranties that are used for commercial, industrial or education purposes revert to a One Year Warranty. This warranty does not cover defects due directly or indirectly to misuse, abuse, negligence or accidents, normal wear-and-tear, improper repair or alterations, or lack of maintenance.

## HOW TO GET SERVICE

The product or part must be returned for examination, postage prepaid, to a location designated by us. For the name of the location nearest you, please call 1-800-274-6848.

You must provide proof of initial purchase date and an explanation of the complaint must accompany the merchandise. If our inspection discloses a defect, we will repair or replace the product, or refund the purchase price, at our option.

We will return the repaired product or replacement at our expense unless it is determined by us that there is no defect, or that the defect resulted from causes not within the scope of our warranty in which case we will, at your direction, dispose of or return the product. In the event you choose to have the product returned, you will be responsible for the shipping and handling costs of the return.

## HOW STATE LAW APPLIES

This warranty gives you specific legal rights; you may also have other rights which vary from state to state.

## LIMITATIONS ON THIS WARRANTY

WMH TOOL GROUP LIMITS ALL IMPLIED WARRANTIES TO THE PERIOD OF THE LIMITED WARRANTY FOR EACH PRODUCT. EXCEPT AS STATED HEREIN, ANY IMPLIED WARRANTIES OR MERCHANTABILITY AND FITNESS ARE EXCLUDED. SOME STATES DO NOT ALLOW LIMITATIONS ON HOW LONG THE IMPLIED WARRANTY LASTS, SO THE ABOVE LIMITATION MAY NOT APPLY TO YOU.

WMH TOOL GROUP SHALL IN NO EVENT BE LIABLE FOR DEATH, INJURIES TO PERSONS OR PROPERTY, OR FOR INCIDENTAL, CONTINGENT, SPECIAL, OR CONSEQUENTIAL DAMAGES ARISING FROM THE USE OF OUR PRODUCTS. SOME STATES DO NOT ALLOW THE EXCLUSION OR LIMITATION OF INCIDENTAL OR CONSEQUENTIAL DAMAGES, SO THE ABOVE LIMITATION OR EXCLUSION MAY NOT APPLY TO YOU.

WMH Tool Group sells through distributors only. The specifications in WMH catalogs are given as general information and are not binding. Members of WMH Tool Group reserve the right to effect at any time, without prior notice, those alterations to parts, fittings, and accessory equipment which they may deem necessary for any reason whatsoever. JET® branded products are not sold in Canada by WMH Tool Group.

# Table of Contents

Warranty and Service.....	2
Table of Contents .....	3
Specifications .....	3
Warnings .....	4
Introduction .....	5
Unpacking .....	6
Standard Components and Optional Accessories .....	6
Electrical.....	8
Electrical Requirements.....	8
Electrical Connections .....	8
Extension Cords .....	8
Parts and Assembly .....	9
JSSG-10 Wet Sharpener Parts List.....	9
JSSG-10 Wet Sharpener Assembly Drawing.....	11
Two Drawer Base Parts List.....	12
DT-1 Diamond Truing Tool.....	13
KJ-1 Knife Jig .....	14
GJ-1 Gouge Jig .....	15
LKJ Long Knife Jig.....	16
STJ-1 Carving Tool Jig.....	17
SJ-1 Scissors Jig .....	17
SWGJ-1 Side Wheel Grinding Jig .....	18
PLH-1 Profiled Leather Honing Wheel .....	18
SEJ-1 Straight Edge Jig .....	19
AJ-1 Axe Jig .....	19
PCJ-1 Plane Camber Jig.....	20
AMD-1 Angle Measuring Device .....	20
TR-1 Tool Rest .....	21
SA-1 Support Arm Assembly.....	21
SAE-1 Support Arm Extension Assembly .....	22
Wiring Diagram .....	23
Replacement Parts.....	24

# Specifications

Model.....	JSSG-10
Stock Number: .....	708015
Overall Dimension (L x W x H/in):.....	16 x 12 x 13
Wheel Size (D x W x Bore /in): .....	10 x 2-1/2 x 1/2
Wheels Included/Grit:.....	220
Motor: .....	120V, 1.8A
Motor RPM .....	3,550
Packing Dimensions (LxWxH/in):.....	19-1/2 x 15 x 17
Net / Gross Weight (LBS):.....	22.5 / 23.5

The specifications in this manual are given as general information and are not binding. WMH Tool Group reserves the right to effect, at any time and without prior notice, changes or alterations to parts, fittings, and accessory equipment deemed necessary for any reason whatsoever.

# Warnings

1. Read and understand the entire owner's manual before attempting assembly or operation.
2. Read and understand the warnings posted on the machine and in this manual. Failure to comply with all of these warnings may cause serious injury.
3. Replace the warning labels if they become obscured or removed.
4. This wet sharpener is designed and intended for use by properly trained and experienced personnel only. If you are not familiar with the proper and safe operation of a wet sharpener, do not use until proper training and knowledge have been obtained.
5. Do not use this wet sharpener for other than its intended use. If used for other purposes, WMH Tool Group disclaims any real or implied warranty and holds itself harmless from any injury that may result from that use.
6. Always wear approved safety glasses/face shields while using this wet sharpener. Everyday eyeglasses only have impact resistant lenses; they are not safety glasses.
7. Before operating this wet sharpener, remove tie, rings, watches and other jewelry, and roll sleeves up past the elbows. Remove all loose clothing and confine long hair. Non-slip footwear or anti-skid floor strips are recommended. Do **not** wear gloves.
8. Wear ear protectors (plugs or muffs) during extended periods of operation.
9. Some dust created by power sanding, sawing, grinding, drilling and other construction activities contain chemicals known to cause cancer, birth defects or other reproductive harm. Some examples of these chemicals are:
  - Lead from lead based paint.
  - Crystalline silica from bricks, cement and other masonry products.
  - Arsenic and chromium from chemically treated lumber.Your risk of exposure varies, depending on how often you do this type of work. To reduce your exposure to these chemicals, work in a well-ventilated area and work with approved safety equipment, such as face or dust masks that are specifically designed to filter out microscopic particles.
10. Do not operate this machine while tired or under the influence of drugs, alcohol or any medication.
11. Make certain the switch is in the **OFF** position before connecting the machine to the power supply.
12. Make certain the machine is properly grounded.
13. Make all machine adjustments or maintenance with the machine unplugged from the power source.
14. Remove adjusting keys and wrenches. Form a habit of checking to see that keys and adjusting wrenches are removed from the machine before turning it on.
15. Keep safety guards in place at all times when the machine is in use. If removed for maintenance purposes, use extreme caution and replace the guards immediately.
16. Make sure the wet sharpener is firmly secured to the floor or bench before use.
17. Check damaged parts. Before further use of the machine, a guard or other part that is damaged should be carefully checked to determine that it will operate properly and perform its intended function. Check for alignment of moving parts, binding of moving parts, breakage of parts, mounting and any other conditions that may affect its operation. A guard or other part that is damaged should be properly repaired or replaced.
18. Provide for adequate space surrounding work area and non-glare, overhead lighting.
19. Keep the floor around the machine clean and free of scrap material, oil and grease.
20. Keep visitors a safe distance from the work area. **Keep children away.**

# Warnings

21. Make your workshop child proof with padlocks, master switches or by removing starter keys.
22. Give your work undivided attention. Looking around, carrying on a conversation and “horse-play” are careless acts that can result in serious injury.
23. Maintain a balanced stance at all times so that you do not fall or lean against the grinding wheels or other moving parts. Do not overreach or use excessive force to perform any machine operation.
24. Use the right tool at the correct speed and feed rate. Do not force a tool or attachment to do a job for which it was not designed. The right tool will do the job better and safer.
25. Use recommended accessories; improper accessories may be hazardous.
26. Maintain tools with care. Follow instructions for lubricating and changing accessories.
27. Make sure the work piece is securely attached or clamped to the table. Never use your hand to hold the work piece.
28. Turn off the machine before cleaning. Use a brush or compressed air to remove chips or debris — do not use your hands.
29. Never leave the machine running unattended. Turn the power off and do not leave the machine until it comes to a complete stop.
30. Remove loose items and unnecessary work pieces from the area before starting the machine.

**Familiarize yourself with the following safety notices used in this manual:**



This means that if precautions are not heeded, it may result in minor injury and/or possible machine damage.



This means that if precautions are not heeded, it may result in serious injury or possibly even death.

**- - SAVE THESE INSTRUCTIONS - -**

## Introduction

This manual contains the parts list and breakdown for the JET JSSG-10 Wet sharpener.

This machine has been designed and constructed to provide years of trouble free operation if used in accordance with instructions set forth in this manual. If there are any questions or comments, please contact either your local supplier or WMH Tool Group. WMH Tool Group can also be reached at our web site: [www.wmhtoolgroup.com](http://www.wmhtoolgroup.com).

# Unpacking

Separate all parts from the packing material. Remove the storage tray and the foam bracing from near the motor. Check each part against Table 1. Make certain that all items in the *Standard* column are included in the shipping container and accounted for before discarding any packing material.

**Note:** *Optional Accessories* are available for purchase by calling the number on the back of this manual.

## Standard Components and Optional Accessories



## Standard Components and Optional Accessories

Item	Stock No	Model No	Description	Standard	Optional
A	708015	JSSG-10	Slow Speed Wet Sharpener	x	
B	708016	AB-2- 2	Drawer Base		x
C	708042		Stone Wheel		x
D	708043		Leather Honing/Strop Wheel		x
E	708024	MC-1	Machine Cover		x
F,G	708018	DT-1	Diamond Truing Tool		x
H	708031	AJ-1	Axe Jig		x
J	708025	STJ-1	Carving Tool Jig		x
K	708019	KJ-1	Knife Jig		x
L	708021	LKJ	Long Knife Jig		x
M	708039	SA-1	Support Arm	x	
N,O	708020	GJ-1	Gouge Jig		x
P,Q	708028	PLH-1	Profiled Leather Honing Wheel		x
R	708040	SAE-1	Support Arm Extension Assembly		x
S	708017	SG-1	Stone Grader	x	
T	708029	SEJ-1	Straight Edge Jig	x	
U	708023		Honing Compound	x	
V	708027	SWGJ-1	Side Wheel Grinding Jig		x
W,X	708026	SJ-1	Scissors Jig		x
Y	708032	PCJ-1	Plane Camber Jig		x
Z	708034	TR-1	Tool rest		x
AA	708033	AMD-1	Angle Measuring Device	x	
BB	708041	AMD-2	Existing Angle Measuring Device	x	
	708036		DVD	x	
	M-708015		Manual	x	

*Table 1*

**For assembly, operation, adjustments, maintenance and troubleshooting, please see the DVD included with this machine.**

# Electrical

## Electrical Requirements

When connecting the bench grinder to the power source outlet, the outlet must be properly grounded to protect the operator from electrical shock.

In the event of a malfunction or breakdown, grounding provides a path of least resistance for electrical current to reduce the risk of electrical shock. This machine is equipped with an electric cord having an equipment-grounding conductor-outlet that is properly installed and grounded in accordance with all local codes and ordinances.

This grinder is equipped with a power cord. Improper connection of the equipment grounding conductor can result in a risk of electric shock. The conductor with insulation having an outer surface that is green (with or without yellow stripes) is the equipment -grounding conductor. If repair or replacement of the electric cord or plug is necessary, do not connect the equipment-grounding conductor to a live terminal.

Plug power cord into a 110-120V properly grounded outlet protected by a 14-amp fuse or circuit breaker.

**⚠ WARNING** Do not touch the prongs of the power cord plug when plugging or unplugging to or from an outlet.

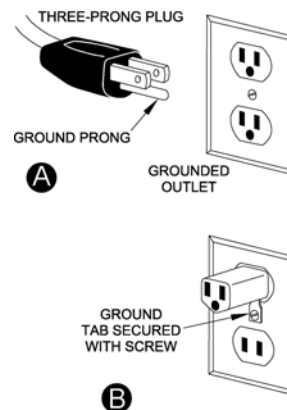
**⚠ WARNING** If improperly grounded, this power tool can cause serious injury from electrical shock, particularly when used in damp locations or near plumbing. If an electrical shock occurs, there is the potential of a secondary hazard such as your hands coming in contact involuntarily with the rotating grinder.

## Electrical Connections

The JSSG-10 Wet Sharpening is rated at 115V, 1Ph. These grinders are designed for use on a circuit with an outlet that looks the one shown in Fig. A. and have a grounding prong, also shown in Fig. A. A temporary adapter (Fig. B) may be used to connect the plug to a two-prong receptacle (Fig. B) if a properly grounded outlet is not available. A temporary adapter should only be used until a properly grounded outlet can be installed by a qualified electrician. **This adapter is not applicable in Canada.** The green colored lug must be fastened to the cover plate screw.

**Important:** The adapter illustrated in Fig. B is for use only if you already have a *properly grounded* two-prong receptacle. Do not modify the plug provided-if it will not fit the outlet, have the proper outlet installed by a qualified electrician. Check with a qualified electrician or service personnel if the grounding instructions are not completely understood, or if in doubt as to whether the tool is properly grounded.

**⚠ WARNING** Before plugging into the power source, be sure that power switch is in the OFF position.



## Extension Cords

Use only three-wire extension cords that have three-prong grounding type plugs and three-prong receptacles that accept the tool's plug. Replace or repair damaged or worn core immediately.

**USE PROPER EXTENSION CORD.** Make sure your extension cord is good condition. When using an extension cord, be sure to use one heavy enough to carry the current your product will draw. An undersized cord will cause a drop in line voltage resulting in loss of power and overheating. Table 1 shows the correct size to use depending on cord length and nameplate ampere rating. If in doubt, use the next heavier gage, The smaller the gage number, the heavier the cord.

Amp Rating	Volts	Total length of cord in feet			
	120V 240V	25 50	50 100	100 200	150 300
AWG					
0 – 6		18	16	16	14
6 – 10		18	16	14	12
10 – 12		16	16	14	12
12 – 16		14	12	not rcmd	not rcmd

Table 1



# Parts and Assembly

## JSSG-10 Wet Sharpener Parts List

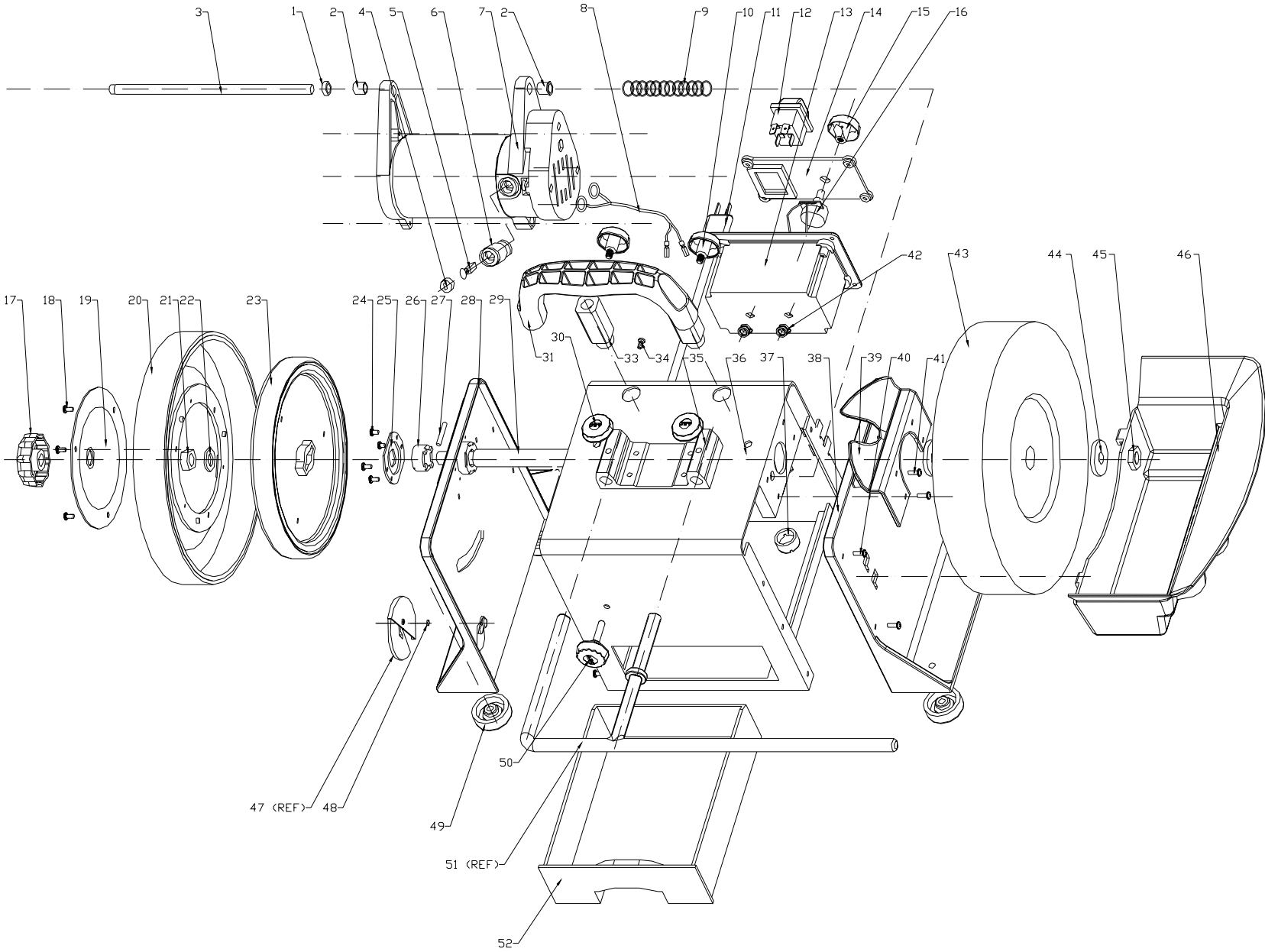
Stock # 708015

Index No	Part No	Description	Size	Qty
1	708015-101	Spacer		1
2	708015-102	Bushing		2
3	708015-103	Motor Mount Shaft		1
4	708015-104	Carbon Brush Cover		2
5	708015-105	Carbon Brush		2
6	708015-106	Carbon Brush Holder		2
7	708015-107	Motor (Complete)		1
8	708015-108	Motor Wire		1
9	708015-109	Pressure Spring		1
10	708015-110	Knob w/M6 Bolt Insert		2
11	708015-111	Power Cord with Plug		1
12	708015-112	Waterproof On/Off Switch		1
13	708015-113	Switch Box		1
14	708015-114	Switch Box Cover		1
15	708015-115	Speed Switch Knob w/Indicator		1
16	708015-116	Speed Adjusting Switch Set		1
17	708015-117	Honing Wheel Lock Knob		1
18	708015-118	Self-Tapping Screw	ST4x6	3
19	708015-119	Honing Wheel End Cover		1
20	708043	Honing Wheel with Leather		1
21	708015-121	Lock Nut		1
22	TS-2360121	Flat Washer	M12	2
23	708015-123	Drive Wheel		1
24	708015-124	Self-Tapping Screw	ST3x4	8
25	708015-125	Slide Bearing Cover		2
26	708015-126	Slide Bearing		2
27	708015-127	Pin		1
28	708015-128	Left Machine Support		1
29	708015-129	Drive Shaft		1
30	708015-130	Horizontal Support Knob		2
31	708015-131	Handle		1
	TS-1504051	Socket Head Cap Screw (For Handle, not shown)	M8x25	2
	TS-1550061	Flat Washer (For Handle, not shown)	M8	2
	TS-1541031	Nylon Insert LockNut (For Handle, not shown)	M8	2
33	708015-133	Vertical Support		2
34	708015-134	Ground Screw		1
35	708015-135	Horizontal Support		1
36	708015-136	Machine Body		1
37	708015-137	Vertical Support Lock Nut		2
38	708015-138	Right Machine Support		1
39	708015-139	Water Shield		1
40	708015-140	Pan Head Machine Screw	M5x6	17
41	TS-1533032	Pan Head Machine Screw	M5x10	13
42	708015-142	Cord Strain Relief		4
43	708042	Stone Wheel		1
44	708015-144	Washer	30mm OD	2
45	TS-1540081	Hex Nut	M12	1
46	708015-146	Water Tank		1
47	708041	AMD-2: Chisel Angle Jig		1
48	708015-148	Cylinder Magnet		1

## JSSG-10 Wet Sharpener Parts List (Continued)

Index No	Part No	Description	Size	Qty
49	708015-149	Rubber Foot		4
50	708015-150	Torque Adjusting Knob		1
51	708039	SA-1: Support Arm Assembly		1
52	708015-152	Drawer		1
	708017	SG-1: Stone Grader (Not Shown)		1
	708029	SEJ-1: Straight Edge Jig (Not Shown)		1
	708033	AMD-1: Angle Measuring Device (Not Shown)		1
	708023	HC: Honing Compound (Not Shown)		1

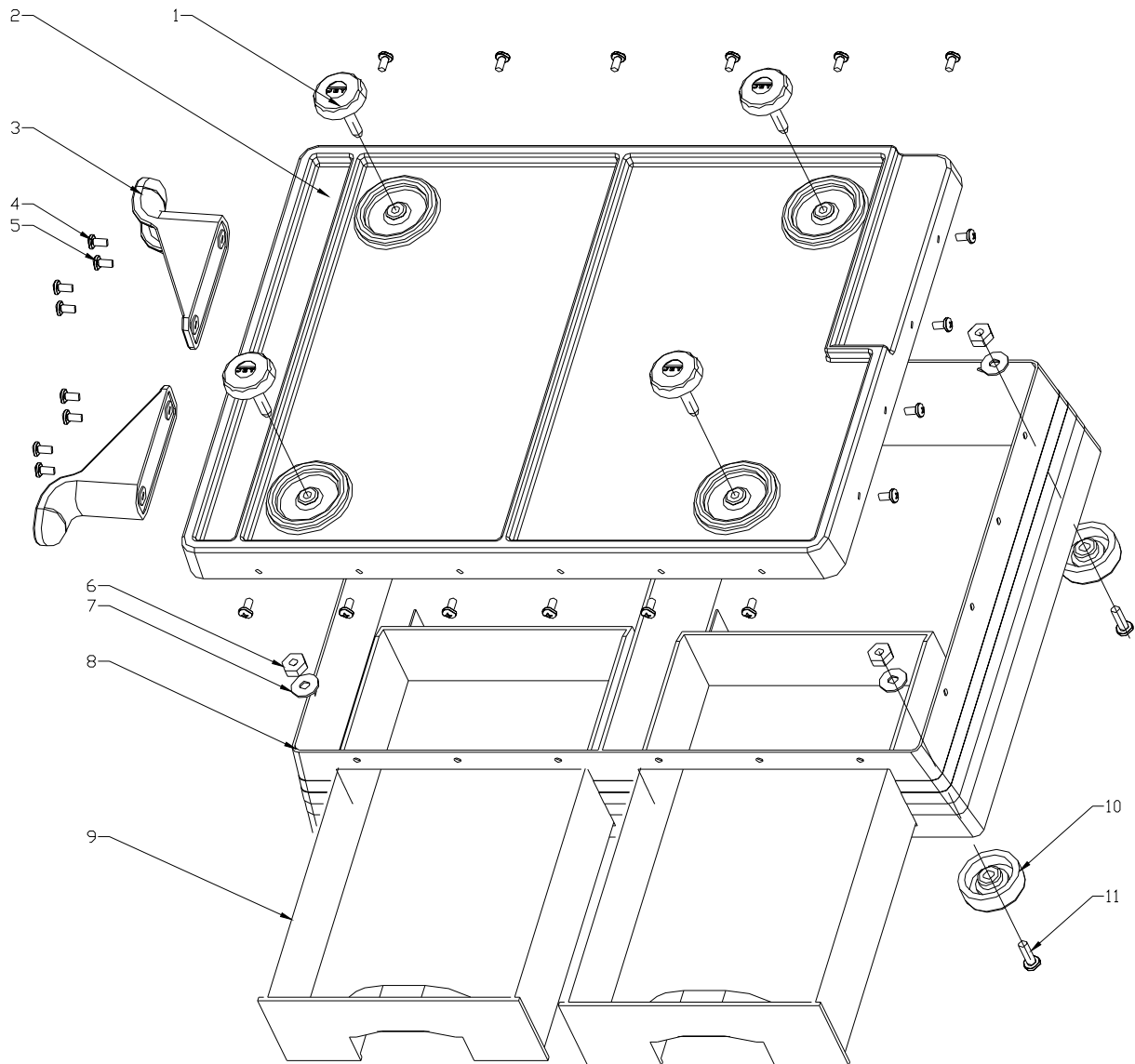
JSSG-10 Wet Sharpener Assembly Drawing



## Two Drawer Base Parts List

Stock # 708016

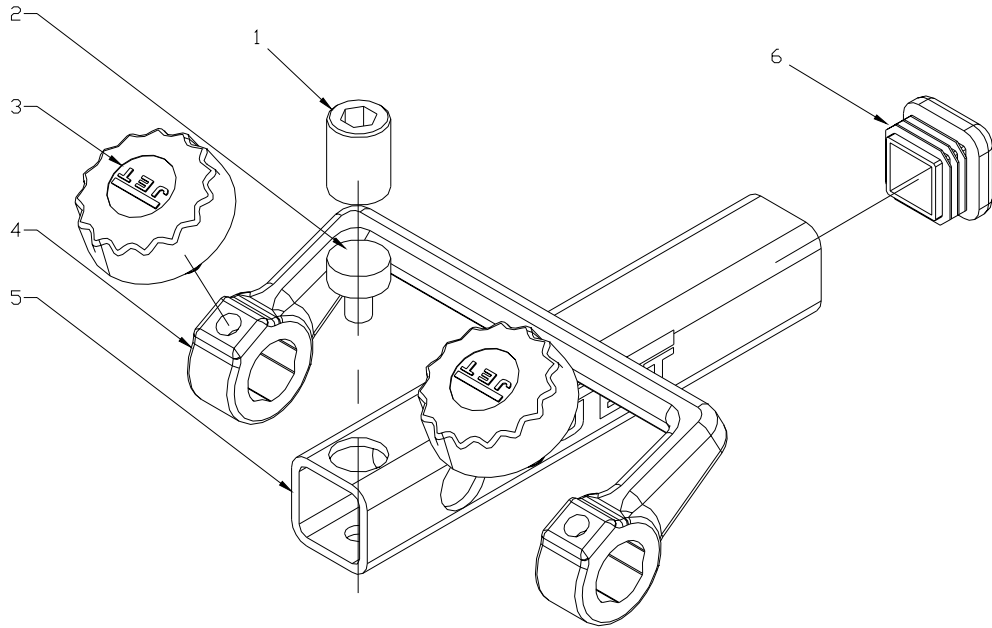
Index No	Part No	Description	Size	Qty
1	708016-101	Knob		4
2	708016-102	Base Top Cover		1
3	708016-103	Cord Wrap Bracket		2
4	708016-104	Self-Tapping Screw	ST4x10	4
5	TS-1532032	Pan Head Machine Screw	M4x10	20
6	TS-1540041	Hex Nut	M6	4
7	TS-1550041	Flat Washer	M6	4
8	708016-108	Base		1
9	708016-109	Drawer		2
10	708015-149	Rubber Foot		4
11	TS-1534052	Pan Head Machine Screw	M6x16	4



# DT-1 Diamond Truing Tool

Stock # 708018

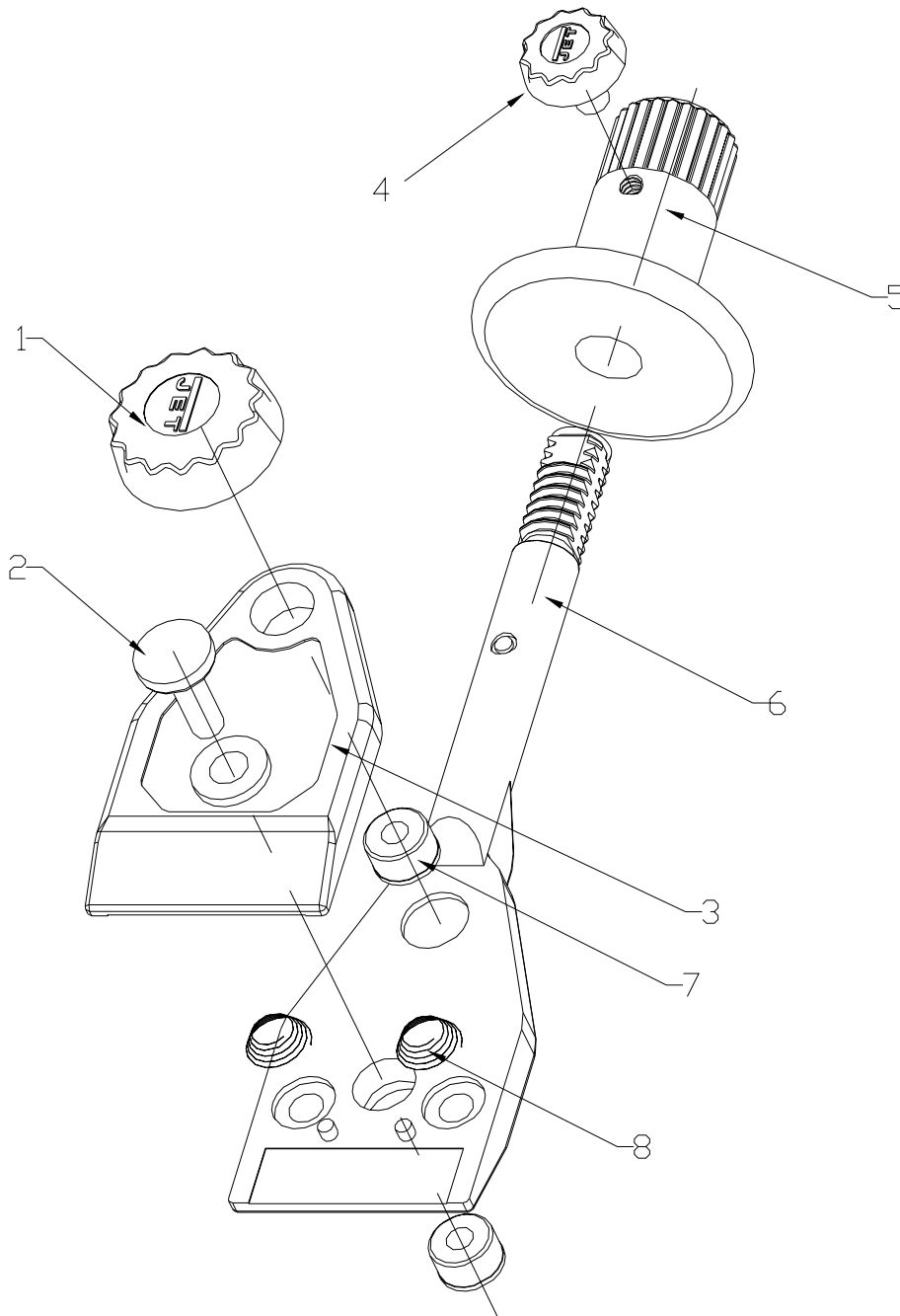
Index No	Part No	Description	Size	Qty
1	708018-101	Lock Screw		1
2	708018-102	Diamond Tip		1
3	708015-110	Knob w/M6 Bolt Insert		2
4	708018-104	Holder		1
5	708018-105	Square Tube		1
6	708018-106	Tube End Cover		1



# KJ-1 Knife Jig

Stock # 708019

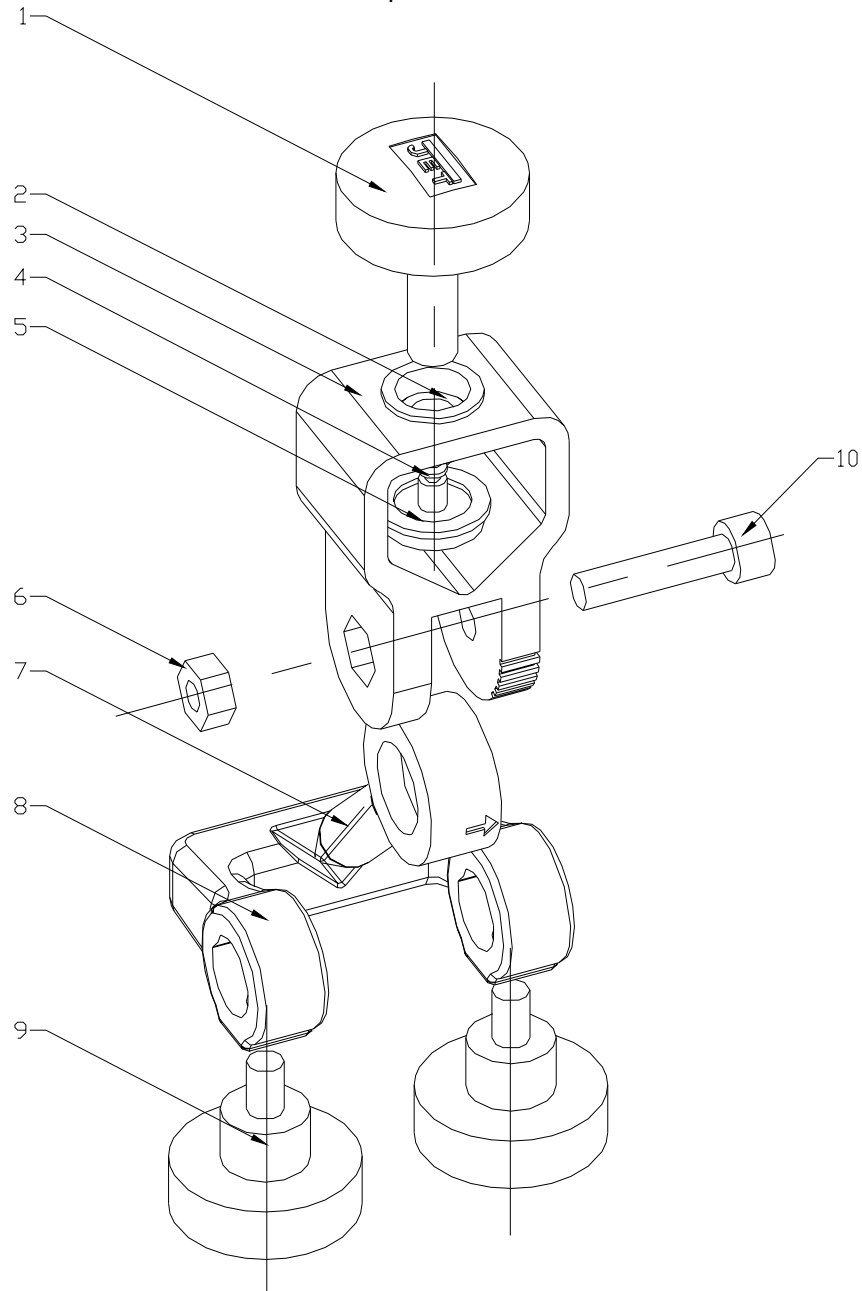
Index No	Part No	Description	Size	Qty
1	708019-101	Knob		1
2	708019-102	Adjusting Knob		1
3	708019-103	Top Plate		1
4	708019-104	Knob		1
5	708019-105	Handle		1
6	708019-106	Bottom Plate		1
7	708019-107	Brass Insert		2
8	708019-108	Cone Spring		2



# GJ-1 Gouge Jig

Stock # 708020

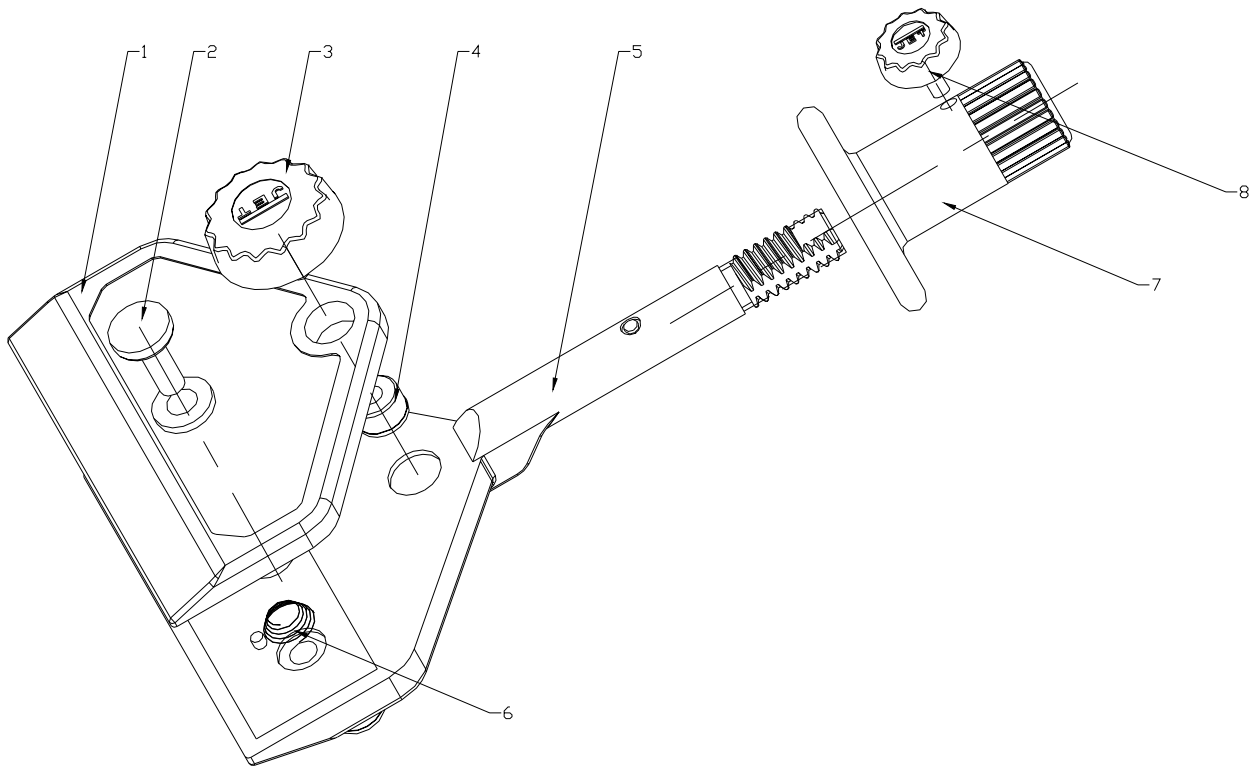
Index No	Part No	Description	Size	Qty
1	708020-101	Knob		1
2	708020-102	Brass Insert		1
3	708020-103	Body		1
4	708020-104	Rubber Ring		1
5	708020-105	Brass End Piece		1
6	TS-1540041	Hex Nut	M6	1
7	708020-107	Pivot		1
8	708020-108	Holder		1
9	708015-110	Knob w/M6 Bolt Insert		2
10	TS-1503061	Socket Head Cap Screw	M6x25	1



# LKJ Long Knife Jig

Stock # 708021

Index No	Part No	Description	Size	Qty
1	708021-101	Top Plate		1
2	708019-102	Adjusting Knob		1
3	708019-101	Knob		1
4	708019-107	Brass Insert		2
5	708021-105	Bottom Plate		1
6	708019-108	Cone Spring		2
7	708019-105	Handle		1
8	708019-104	Knob		1

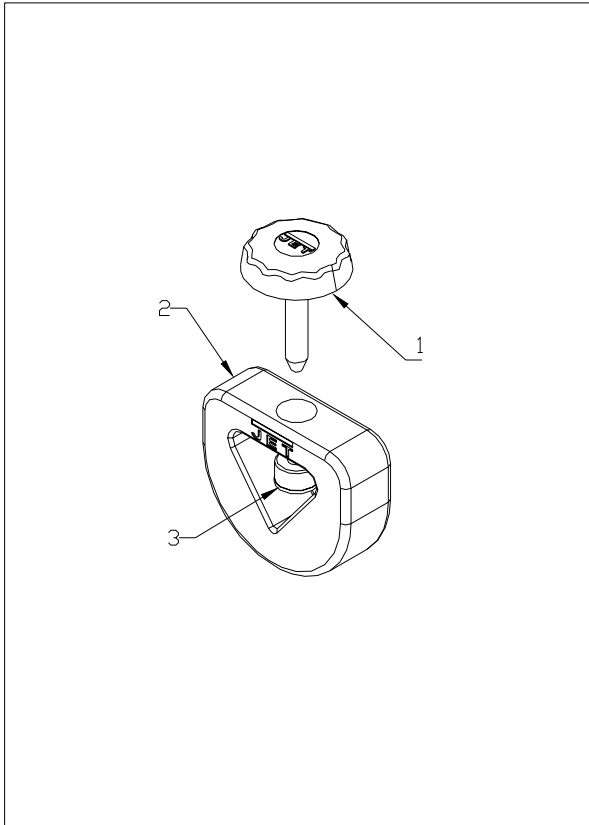




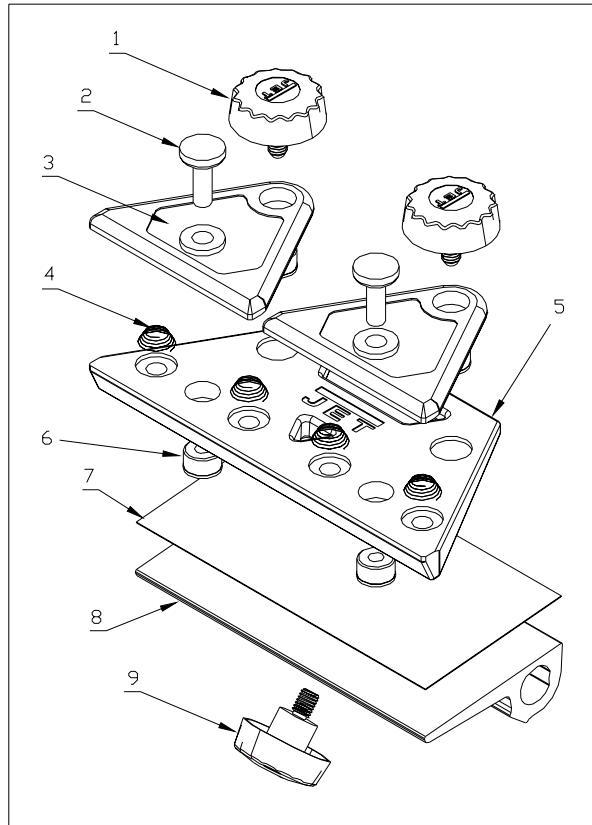
## STJ-1 Carving Tool Jig

Stock # 708025

Index No	Part No	Description	Size	Qty
1	708016-101	Knob		1
2	708025-102	Body		1
3	708025-103	Brass Insert		1



STJ-1 – Short Tool Jig



SJ-1 – Scissors Jig

## SJ-1 Scissors Jig

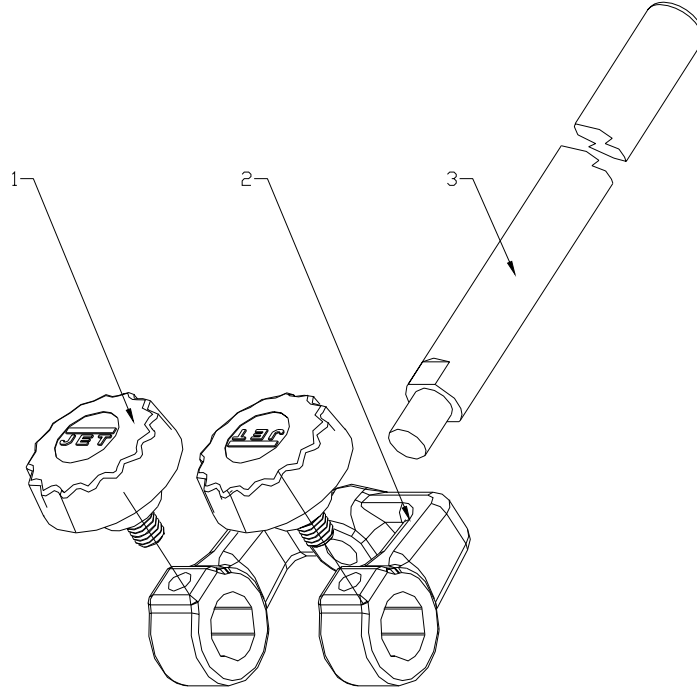
Stock # 708026

Index No	Part No	Description	Size	Qty
1	708019-101	Knob		2
2	708019-102	Adjusting Knob		2
3	708026-103	Top Plate		2
4	708019-108	Cone Spring		4
5	708026-105	Bottom Plate		1
6	708019-107	Brass Insert		4
7	708026-107	Plastic Slide Sheet		1
8	708026-108	Scissors Jig Rest		1
9	708015-110	Knob w/M6 Bolt Insert		1

## SWGJ-1 Side Wheel Grinding Jig

Stock # 708027

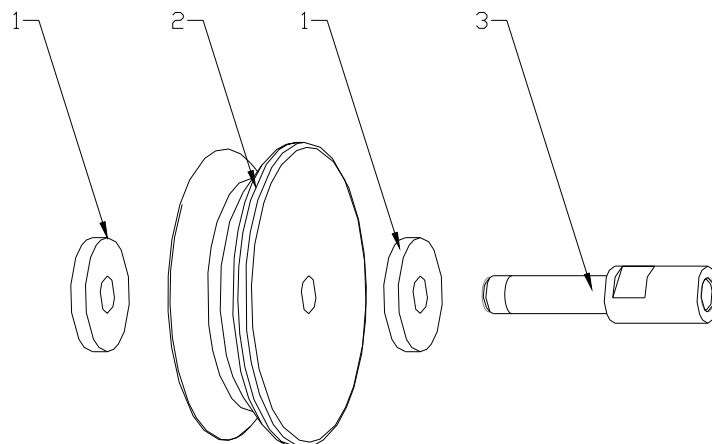
Index No	Part No	Description	Size	Qty
1	708015-110	Knob w/M6 Bolt Insert		2
2	708027-102	Holder		1
3	708027-103	Bar		1



## PLH-1 Profiled Leather Honing Wheel

Stock # 708028

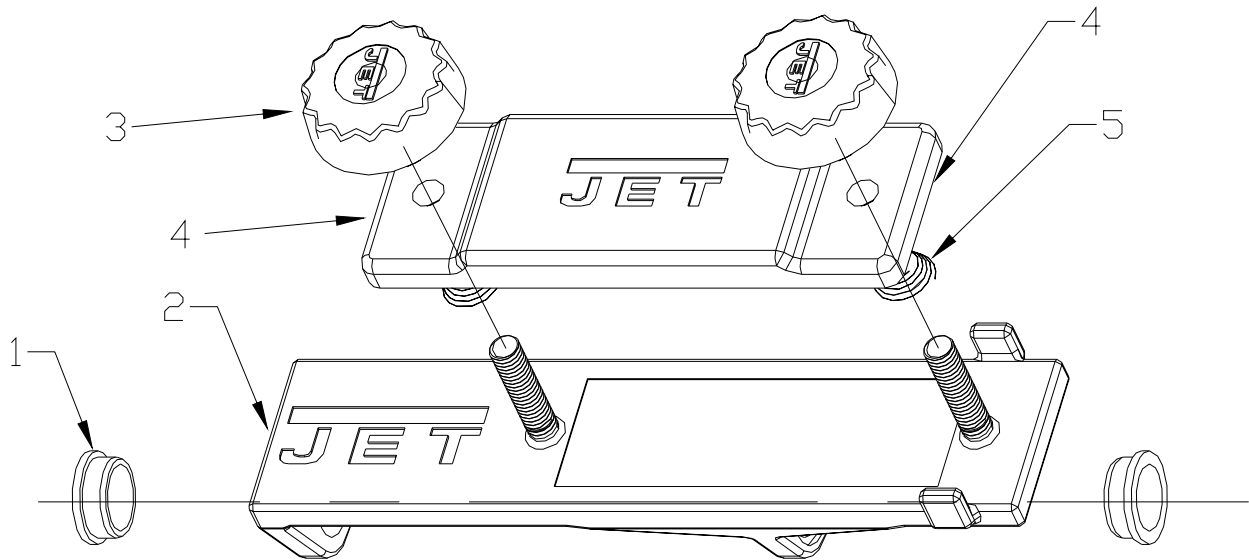
Index No	Part No	Description	Size	Qty
1	708028-101	Washer	35mm OD	2
2	708028-102	Leather Wheel		1
3	708028-103	Shaft		1



## SEJ-1 Straight Edge Jig

Stock # 708029

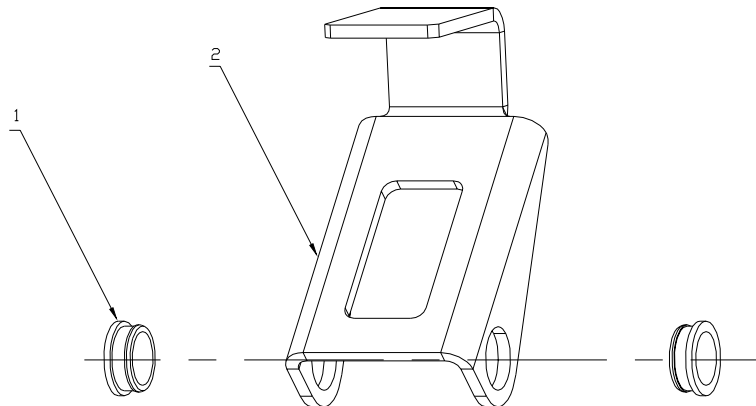
Index No	Part No	Description	Size	Qty
1	708029-101	Bushing		2
2	708029-102	Bottom Plate		1
3	708029-103	Knob		2
4	708029-104	Top Plate		1
5	708019-108	Cone Spring		2



## AJ-1 Axe Jig

Stock # 708031

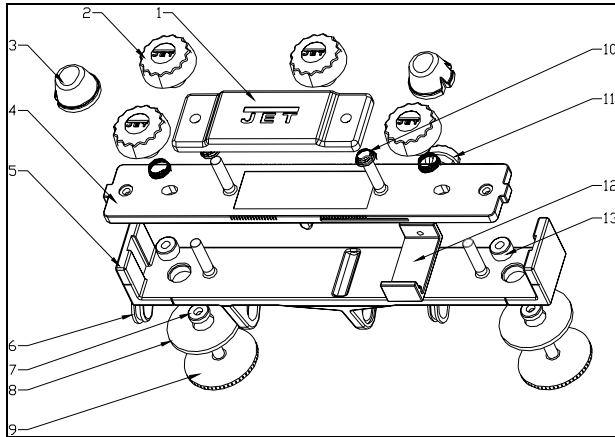
Index No	Part No	Description	Size	Qty
1	708029-101	Bushing		2
2	708031-102	Axe Holder		1



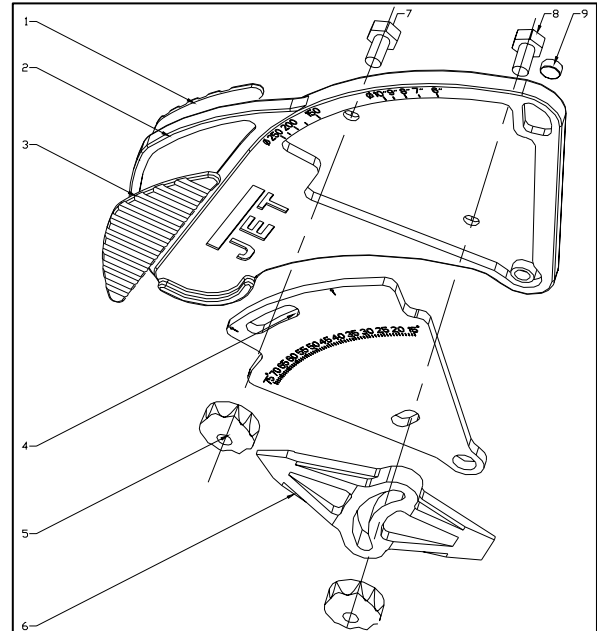
## PCJ-1 Plane Camber Jig

Stock # 708032

Index No	Part No	Description	Size	Qty
1	708029-104	Top Plate		1
2	708029-103	Knob		4
3	708032-103	Rubber Rest		2
4	708032-104	Middle Plate		1
5	708032-105	Bottom Plate		1
6	708029-101	Bushing		2
7	708032-107	Lock Plate Brass Insert		2
8	708032-108	Lock Plate		2
9	708032-109	Adjusting Screw		2
10	708019-108	Cone Spring		4
11	708032-111	Knob		1
12	708032-112	Slide Plate		1
13	708032-113	Brass Insert		2



PCJ-1 Plane Camber Jig



AMD-1 Angle Measuring Device

## AMD-1 Angle Measuring Device

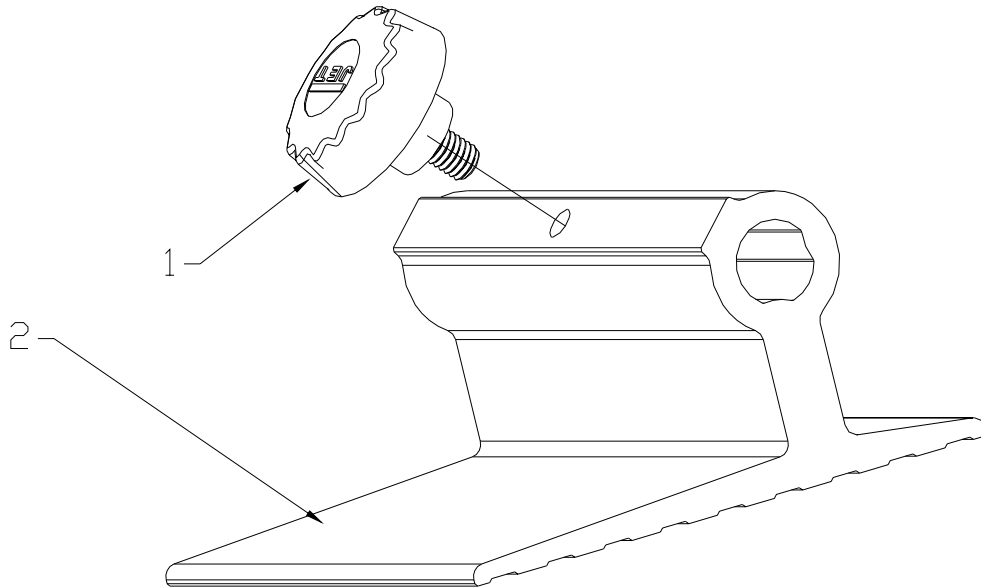
Stock # 708033

Index No	Part No	Description	Size	Qty
1	708033-101	Bottom Rubber Grip		1
2	708033-102	Angle Measuring Body		1
3	708033-103	Top Rubber Grip		1
4	708033-104	Angle Measuring Dial		1
5	708033-105	Knob		2
6	708033-106	Indicator		1
7	708033-107	Hex Bolt	M4x8	1
8	708033-108	Hex Bolt	M4x14	1
9	708033-109	Cylinder Magnet		1

## TR-1 Tool Rest

Stock # 708034

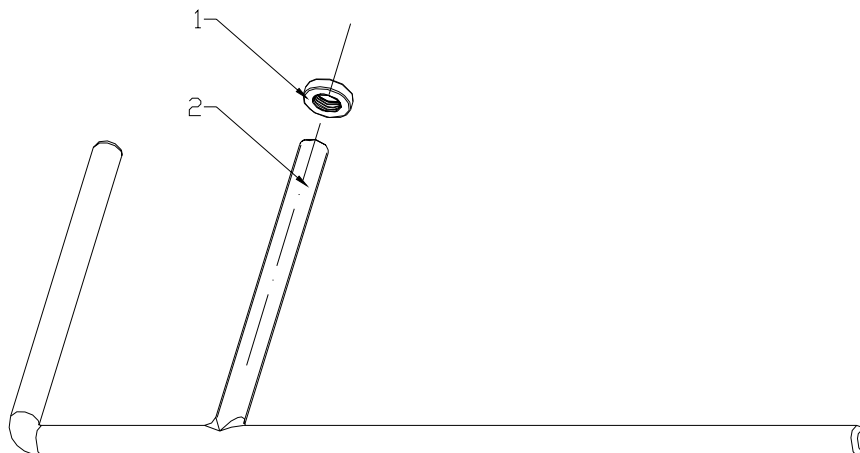
Index No	Part No	Description	Size	Qty
1	708015-110	Knob w/M6 Bolt Insert		1
2	708034-102	Tool Rest		1



## SA-1 Support Arm Assembly

Stock # 708039

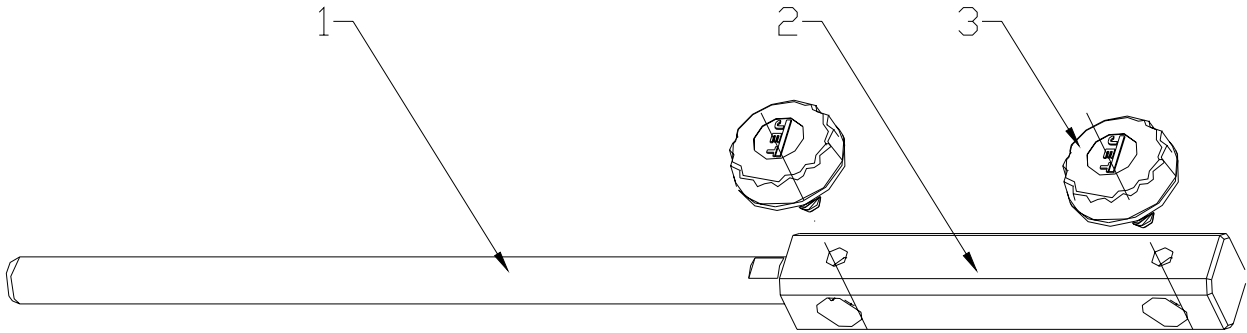
Index No	Part No	Description	Size	Qty
1	708039-101	Support Arm		1
2	708039-102	Adjusting Nut		1



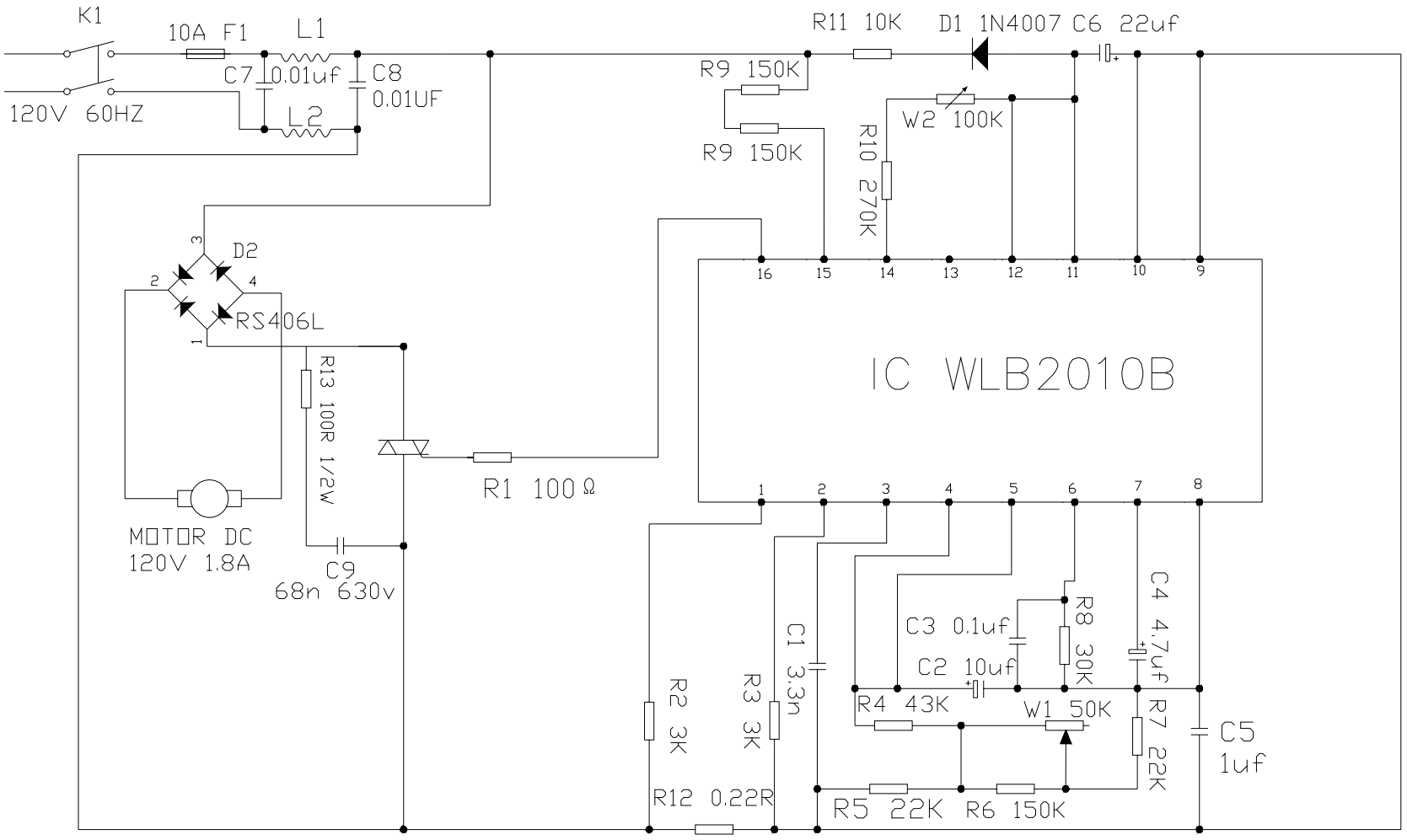
# SAE-1 Support Arm Extension Assembly

Stock # 708040

Index No	Part No	Description	Size	Qty
1	708040-101	Extension Bar		1
2	708040-102	Extension Bar Base		1
3	708015-110	Knob w/M6 Bolt Insert		2



Wiring Diagram



## **Replacement Parts**

To order parts or reach our service department, call 800-274-6848 between 7:30 a.m. and 5:30 p.m. (CST), Monday through Friday. Having the Model Number and Serial Number of your machine available when you call will allow us to serve you quickly and accurately.



**WMH Tool Group**  
2420 Vantage Drive  
Elgin, Illinois 60123  
Phone: 800-274-6848  
[www.wmhtoolgroup.com](http://www.wmhtoolgroup.com)